

## FEATURES



### USED BY:

- SHIPYARDS
- STEEL PLANTS
- MILITARY
- MANUFACTURERS OF:
  - WHITE GOODS
  - MOTORS
  - VALVES
  - PUMPS
  - LIFTS
  - CRANES
  - FIRE DOORS
  - LOGGING INDUSTRIES
- LOGISTICS MANAGEMENT
- POWER AND UTILITY COMPANIES

### IDEAL FOR:

- MILITARY ID TAGS
- CABLE AND HOSE TAGS
- INVENTORY, ASSET CONTROL AND TRACKING TAGS FOR HARSH ENVIRONMENTS
- WORK IN PROGRESS
- COMPONENT ID
- TAGS FOR GALVANIZED OR HEAT-TREATED PROCESSES
- SERIAL NUMBER TAGS

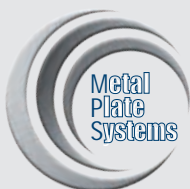
### FULLY STAND ALONE SOLUTION

ALL FUNCTION'S NEEDED  
ALREADY BUILT INTO  
THE MACHINE'S CPU

### SOFTWARE



Support barcode 2D encodation data  
ActiveX Controls for the barcode  
generation  
Hardlock protection key

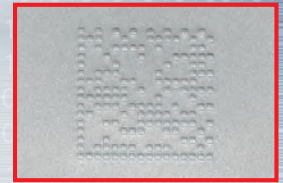


# METAL EMBOSSEER SERIES ME 500 2D DATA MATRIX

## 2D Data Matrix



Interchangeable input hopper  
for multiple plates



2D DATA MATRIX barcode

## THE PORTABLE SOLUTION FOR EMBOSSING OF METAL PLATES AND DOG TAGS WITH 2D DATA MATRIX BARCODE

The **ME 500 2D Data Matrix** is a portable **METAL TAG EMBOSSING SOLUTION** that offers the ability to emboss different tag sizes, it is developed for component and production line identification and traceability applications. The **ME 500 2D Data Matrix** is equipped with an Automatic Feeder, the input hopper contains up to 120 standard tags.

The **ME 500 2D Data Matrix** allows to mark ALPHANUMERIC CHARACTERS and **2D DATA MATRIX** bar codes on metal tags. The **2D DATA MATRIX** barcode has the ability to contain a high volume of data on limited space.

The **ME 500 2D Data Matrix** is a completely self-contained tag marking machine that is **EASY TO TRANSPORT**, and is ideal for permanent marking of steel and aluminum tags. Designed to **OPERATE IN HARSH INDUSTRIAL ENVIRONMENTS**, the **ME 500 2D Data Matrix** is equipped with a **BUILT-IN LINUX BASED CPU** and an industrial spill proof membrane keyboard that allows the machine to work completely stand-alone without a PC. The interface is user-friendly and the large high resolution **LCD DISPLAY** makes data entry quick and easy in any production environment.



Metal Plates



Dog Tags & Medical Alert Tags



# FEATURES AND SPECIFICATIONS



Internal view



Integrated standard keyboard



Easy to carry handle



**2D Data Matrix**



## PLATE AND FEEDER

**dimensions** Metal plates up to 2.35"x2.56" and all dog tags and medical alert dog tags are supported  
**materials** stainless steel, aluminum  
**thickness** Metal plates: 0.3556 – 0.70 mm / 0.014 - 0.027 in  
 Dog Tags: 0.3556 - 0.4572 mm / 0.014 - 0.018 in  
 Medical Alert Tags: 0.6604 - 0.8128mm / 0.026 - 0.032 in  
**input hopper** up to 120 plates capacity (0.4 mm / 0.0157 in)

## MARKING

**technology** Embossing  
**drum capacity** 60 slots  
**type set** Simplex 2, Block USA, Block 5  
**embossing area** up to 10 lines/20 characters  
**performance** Metal plates: one plate each 34" (5 lines – 12 characters)  
 Dog Tags: one plate each 27" (5 lines – 45 characters)

2D Data Matrix	Spacing	Dot	Performance
12x12	SP=04	0.50 mm	1 plate each 43 sec
14x14	SP=04	0.50 mm	1 plate each 52 sec
16x16	SP=04	0.50 mm	1 plate each 67 sec

## COMMUNICATION AND SOFTWARE

**interface** RS232 serial and USB 2.0 port  
**software** Linux based self enclosed software  
 Sword Pc application proprietary software compatible with Windows 7/8/10  
**direct control** CIM, Xon-Xoff, MultiEmbosser, Stored Format default, Stored Format  
**protocol** Selected and Pound-Pound: for internal application development

## HARDWARE

**power supply** universal switching power supply 100-240 Volts; 50 or 60 Hz  
**power consumption** 300 W max  
**operating environment** temperature: 5° ÷ 40°C 7 / 41° ÷ 104° F  
 relative humidity 30% ÷ 90°  
**dimensions (WxDxH)** 460 x 605 x 280 mm / 18.11 x 23.81 x 11.02 in  
**weight** 30 Kg / 68 lbs

## VARIOUS

**LCD display** innovative backlight LCD (320 x 180 mm) display with high readability and reversed characters for direct sun view  
 built in keyboard  
 easy to carry handle  
**others** multilingual menu: english, spanish, italian

The **ME 500 2D Data Matrix** has been designed as the ideal no hassle for low to medium metal plates and dog tags volumes.

The **ME 500 2D Data Matrix** is equipped with an **Automatic Feeder**, the input hopper contains up to 120 standard tags.

The **ME 500 2D Data Matrix** is able to emboss up to 105 metal plates per hour. The unit weighs 30 kg, making it a compact, rugged, all inclusive solutions for metal plates and dog tags marking.

The **ME 500 2D Data Matrix** comes with an integrated Linux based CPU that allows the machine to work completely stand alone.

Davies Enterprises Ltd.  
 114 Chain Lake Drive  
 Halifax, NS B3S1B1  
 (902)450-5075  
 www.daviesenterprises.com



cim-usa.com

